



TIPS, TRICKS, FUN FACTS AND CONTROVERSIES

1



2

RESEARCH PAPER McDowell *et al* 2018 Animal Behaviour

Lateralization of spontaneous behaviours in the domestic cat, *Felis silvestris*

Spontaneous behaviors:

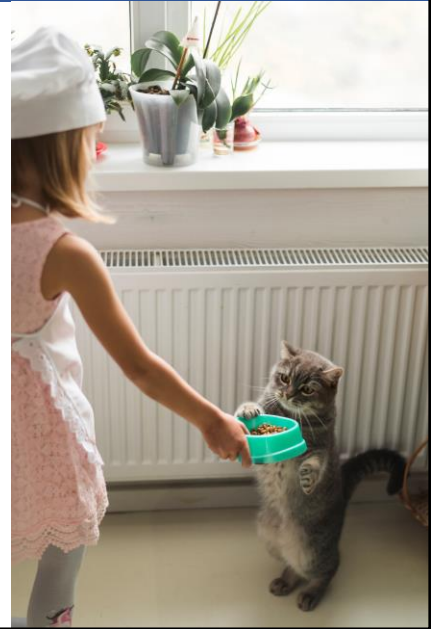
Stepping down stairs

Stepping over a raised object

Preferred side for laying

Challenged behaviour:

Food reaching



3

Paw preference

73% for food reaching

70% for going down steps

66% for stepping over or into something

♀ RIGHT
♂ LEFT



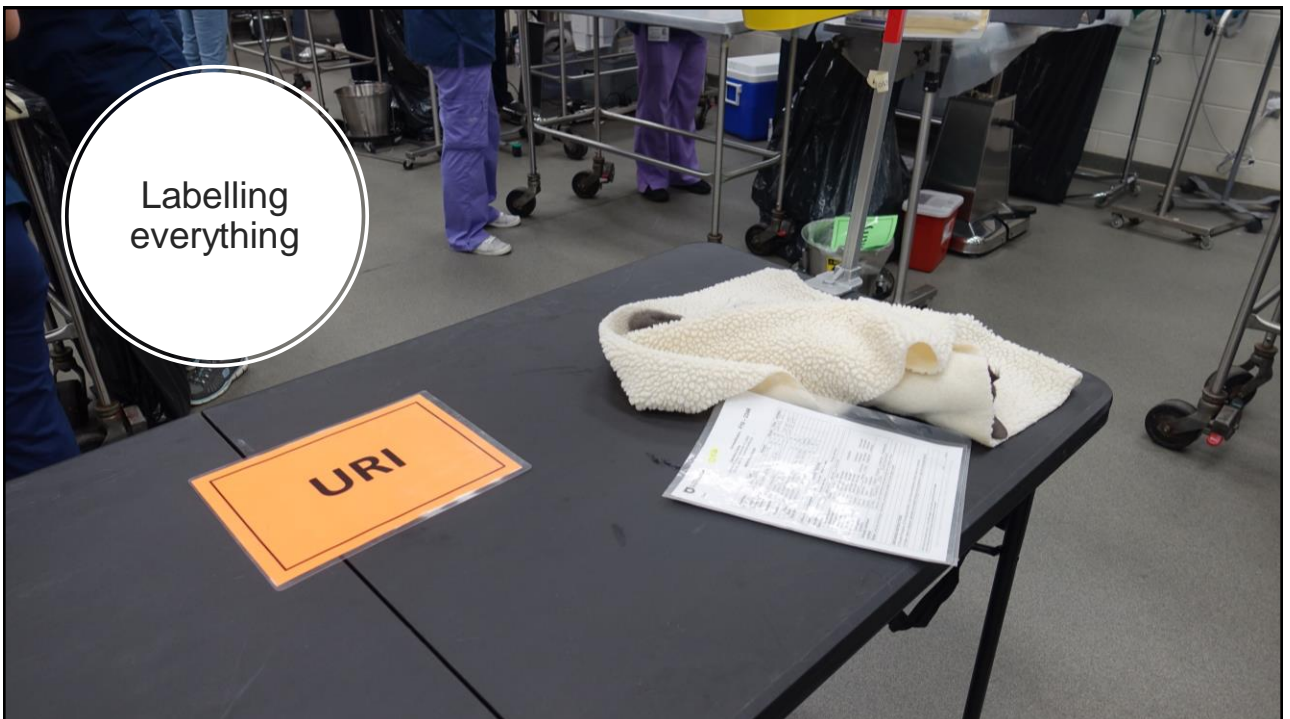
4

MACGYVER

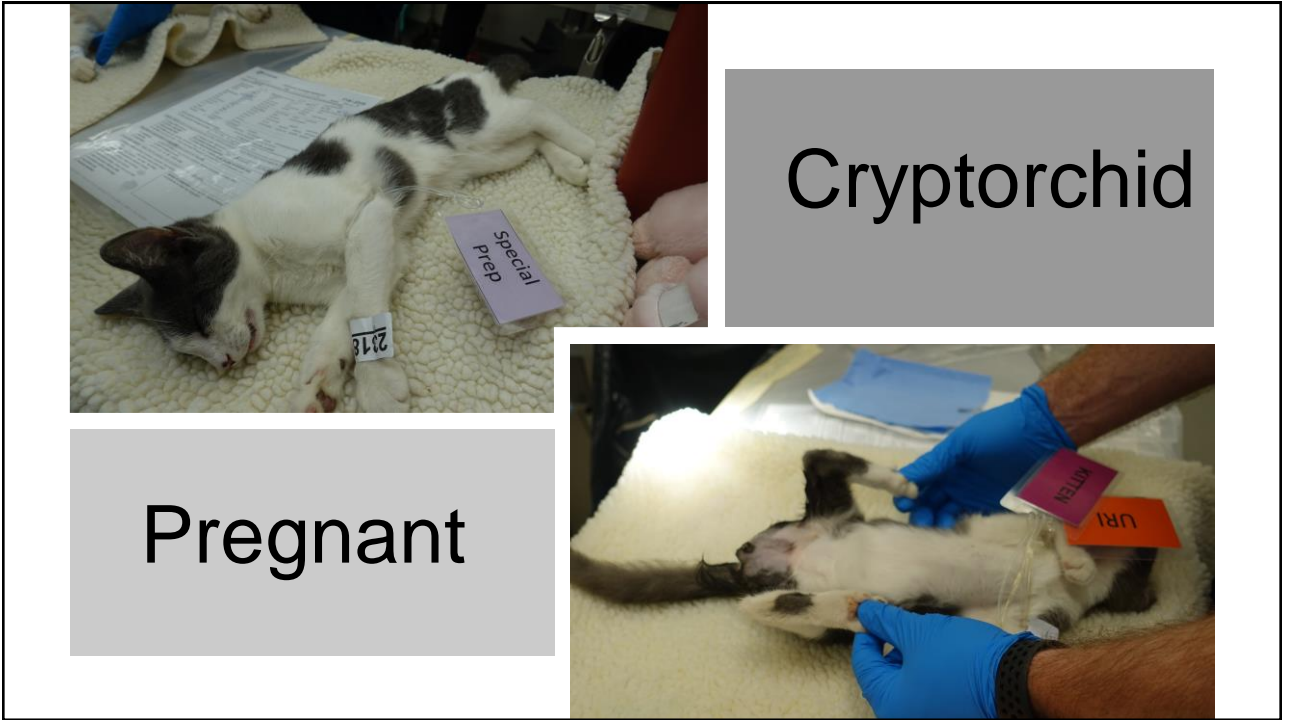
Noun - MACGYVER

Verb - MACGYVERING

5



6



7



8



9



10



11

MIDLINE OR FLANK?

OVARIOHYSTERECTOMY OR
OVARIECTOMY?

12



13

Comparison of flank and midline approaches to the ovariohysterectomy of cats

R. J. COE, N. J. GRINT, M. S. TIVERS, A. HOTSTON MOORE, P. E. HOLT

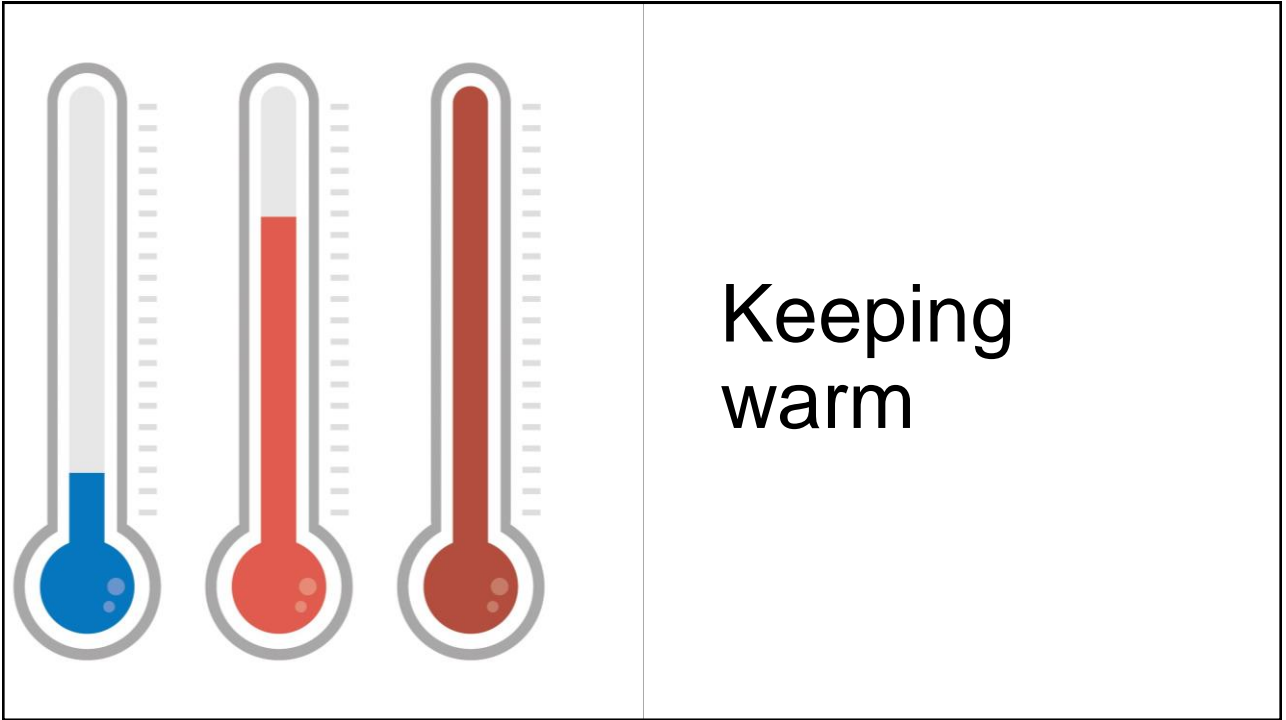
Vet Rec 2006; 159:309-313

Prospective comparison of perioperative wound and pain score parameters in cats undergoing flank vs midline ovariectomy

Matthew J Swaffield¹ , Sara L Molloy² and Victoria J Lipscomb²

JFMS 2019 E pub ahead of print

14



15



16



17





18



19



20

Innovative Pet Restraints & Supplies, Since 1985

[Shopping Cart](#)
 Items in Cart: 0
 Total: \$0.00
[View Cart](#) [CHECKOUT](#)

[Home](#) | [Pet Control](#) | [Pet Care](#) | [For Pet Professionals](#) | [Sale Items](#) | [Sizing & Usage](#) | [About Four Flags](#) | [Customer Service](#)

[Pet Care > Fleece By the Yard >](#)

[Register](#) | [Log In](#) | [My Account](#)

[Click here for current WEB SPECIALS](#) | [Interested in WHOLESALE PRICING?](#)

Same-Day Shipping GUARANTEED

or your order ships free.
* note shipping policy

Shop SALE Items

Search: [GO](#)

- Pet Control
- Pet Care
 - Animal Stretchers
 - Quick Lifts™
 - All-Purpose Aprons
 - Fleece Pads
 - Fleece By the Yard
 - Bite Not Collar®
 - Hair Busters™
- For Pet Professionals
- Sale Items
- Sizing & Usage
- About Four Flags
- Customer Service

Fleece By the Yard

Polyester Fleece (Natural, 60" width, 20.5 oz/linear ft.) in a 5-, 10- pieces and by the roll (approx. 45 yds.)

- For those who prefer DIY, our fleece is available by the yard.
- Available in 5-, 10-yard pieces or by the roll (approx. 45 yds).
- There are no returns on this item, so please request a sample before ordering.
- ACTUAL SHIPPING IS ADDED to all fleece by the yard fleece orders. Call for a quote or select UPS Ground on checkout for price.



Cat #: F5
Item #: 55903


Polyester Fleece 5 yards.

*When purchasing more than one F5 actual freight will be added to order.

Weight / Size:
Color:

Price: \$65.00

[ADD TO CART](#)



Cat #: F10
Item #: 55902


Polyester Fleece 10 yards.

Polyester Fleece 10 yds. * Actual UPS shipping charges are added to this item (Est. \$30-\$40). Call or email for your cost.

Weight / Size:
Color:

Price: \$130.00

[ADD TO CART](#)



Cat #: F45_Fleece, full roll
Item #: 55904

Fleece Full Roll, Price Per Yard

Polyester Fleece Roll, 63" width; Approx. 45 yd. roll. ENTER 45 IN QTY FOR 1 ROLL.
Call For actual item cost and shipping charges.

Ideal for Breed Type: All Breeds
Weight / Size: PRICE PER YARD — Enter yardage shipped
Color: Natural

Price: \$12.80

[ADD TO CART](#)

[800-222-9263](#) | [Contact Us](#) | [Request/Download a Catalog](#) | [Custom Artwork Guidelines](#) | [Privacy Policy](#)

©2017 Four Flags Over Aspen, All Rights Reserved. All Rights Reserved.

www.fourflags.com

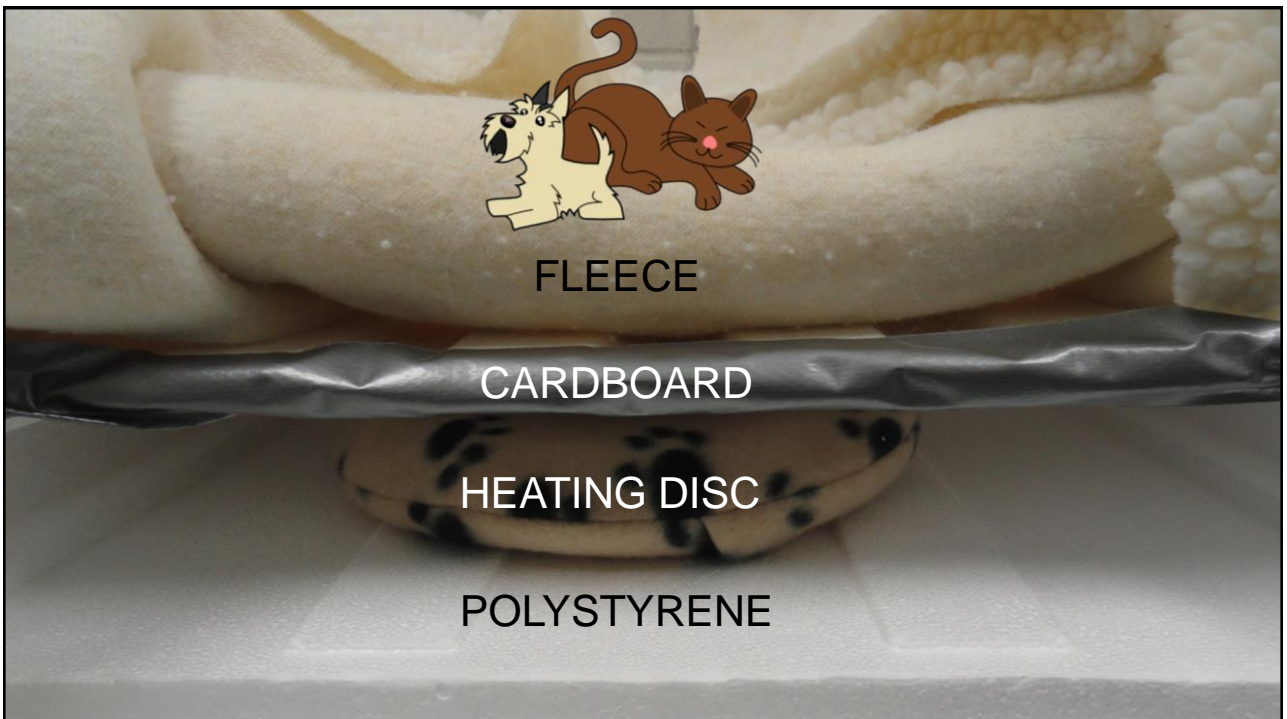
21



22



23



24



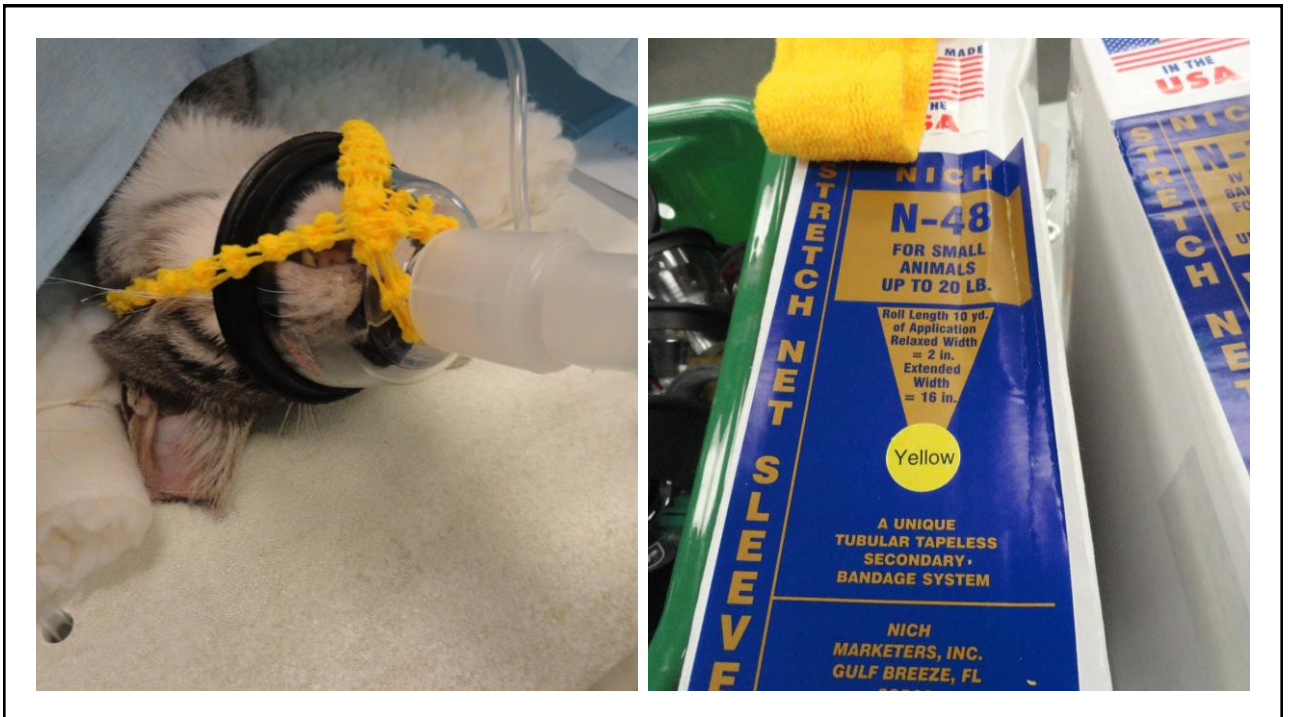
25



26



27



28



29



Eye lubricant

30



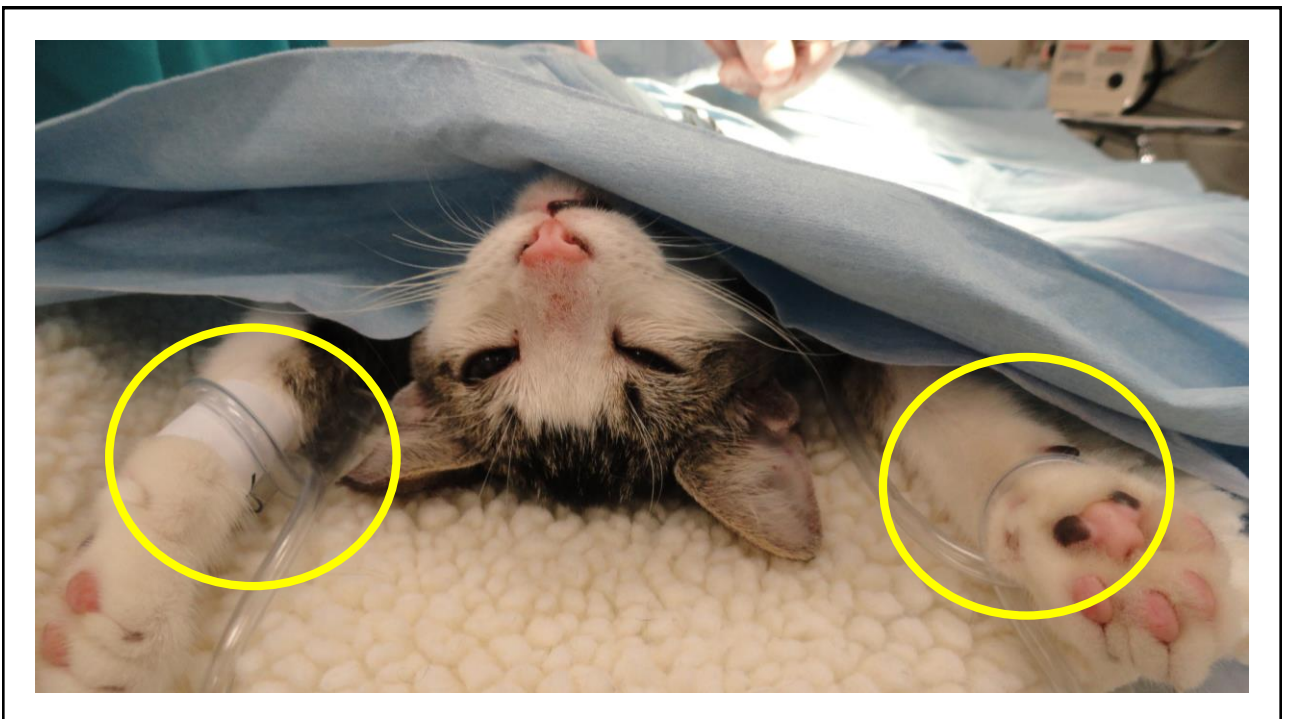
31



32



33



34

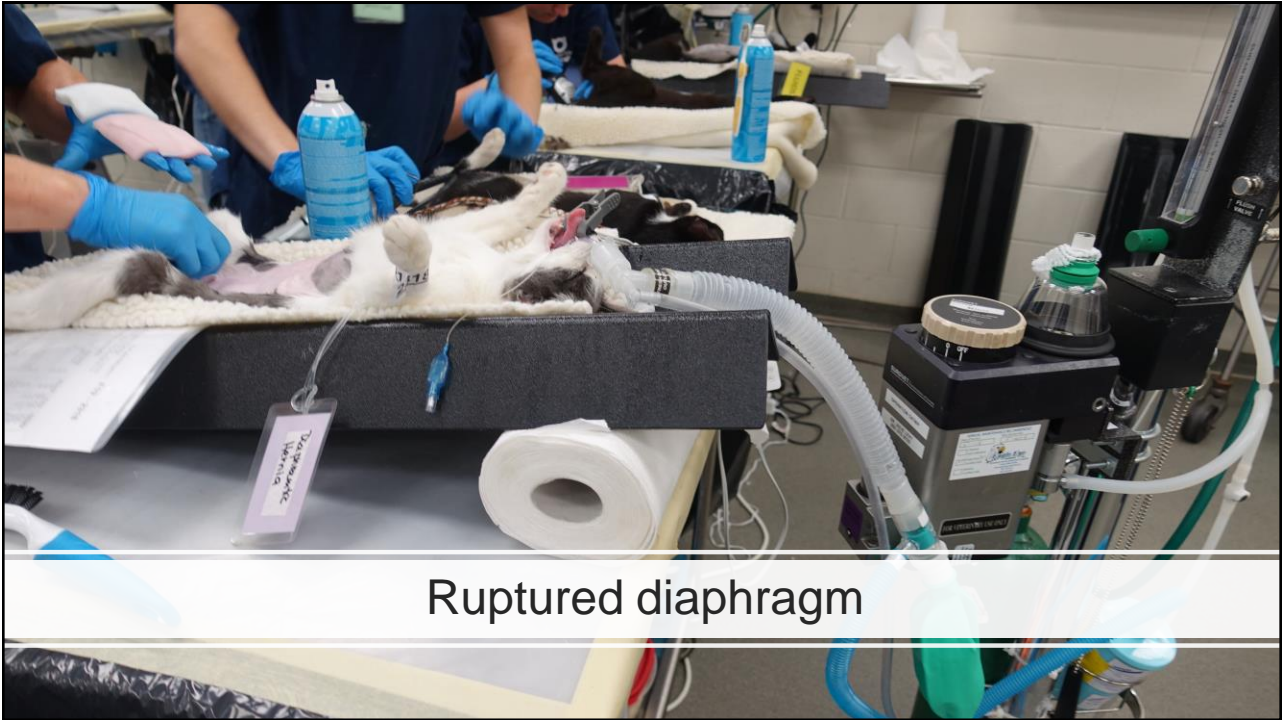


35

Positioning – obese, pregnant



36



Ruptured diaphragm

37



Emergency station

38

A black medical cart with three drawers. The top drawer is labeled 'CARDIAC' on both sides. The middle drawer is labeled 'RESPIRATORY' on both sides. The bottom drawer is labeled 'MISC MEDS / NEEDLES / SYRINGES'. The cart is open, revealing various medical supplies including syringes, vials, and tubing.

20



41



CAT NOT
BREATHING

42

Not breathing?



43



Emergency Drug Dosing Chart

Body Weight lb	Epinephrine	Epinephrine	Atropine		
	IV (ml)	IT (ml)	IV (ml)	Doxapram	Diazepam
				IV (ml)	IV (ml)
2 lb	0.01	0.09	0.06	0.05	0.09
3 lb	0.01	0.14	0.10	0.08	0.14
4 lb	0.02	0.18	0.13	0.10	0.18
5 lb	0.02	0.23	0.16	0.13	0.23
6 lb	0.03	0.27	0.19	0.15	0.27
7 lb	0.03	0.32	0.22	0.18	0.32
8 lb	0.04	0.36	0.25	0.20	0.36
9 lb	0.04	0.41	0.29	0.23	0.41
10 lb	0.05	0.45	0.32	0.25	0.45
11 lb	0.05	0.50	0.35	0.28	0.50
12 lb	0.05	0.55	0.38	0.30	0.55
13 lb	0.06	0.59	0.41	0.33	0.59

44




45

Visceral pain



46


$$\text{DOSE mg to be added} = \text{diluent volume} \times \frac{\text{dose mg/kg/hour}}{\text{fluid rate mls/kg/hr}}$$

47

Butorphanol CRI

Butorphanol at 0.1 mg/kg/hour

1-liter bag of fluids

Fluid rate = 5mls/kg/hour

48

$$\begin{array}{lcl}
 \text{mg to be} & & \\
 \text{added} & = 1000 \text{ mls X} & \frac{0.1 \text{ mg/kg/hour}}{5 \text{ mls/kg/hr}} \\
 \mathbf{20 \text{ mg}} & &
 \end{array}$$

49

Great downloadable and online calculators at:

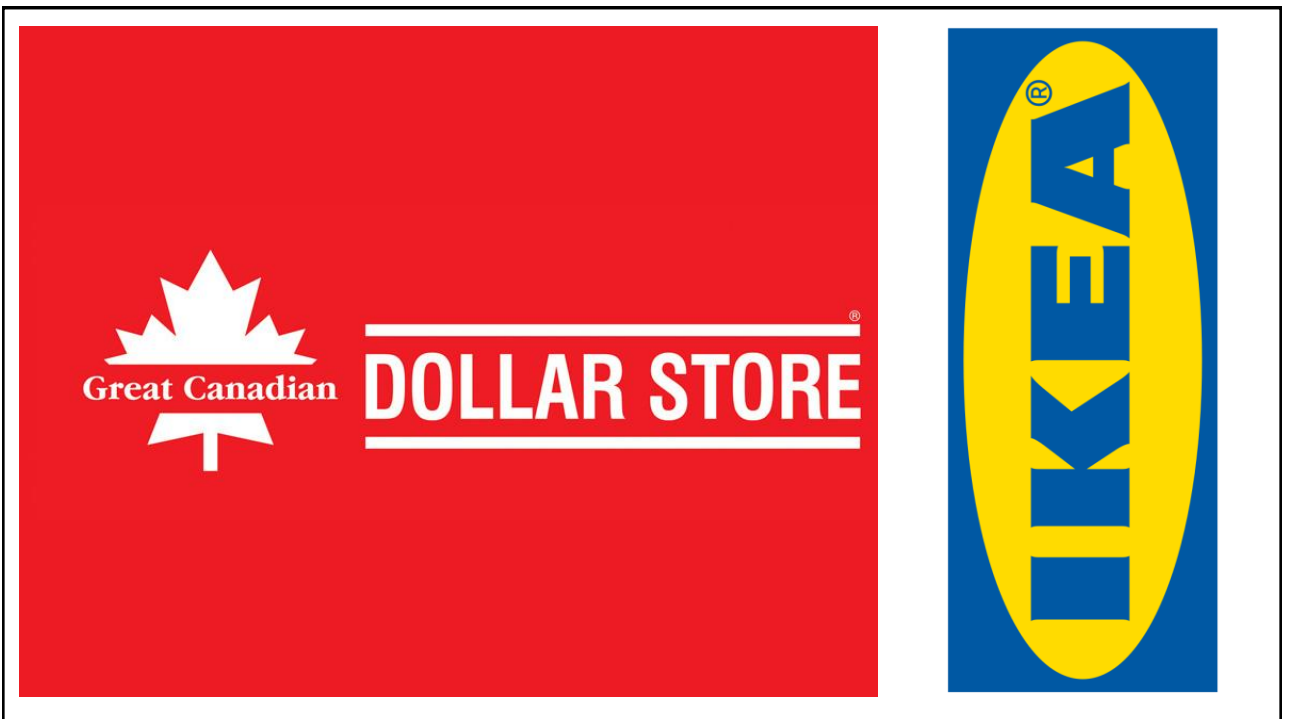
<http://www.vasg.org/>

http://www.vasg.org/drug_delivery_calculators.htm

50



51



52



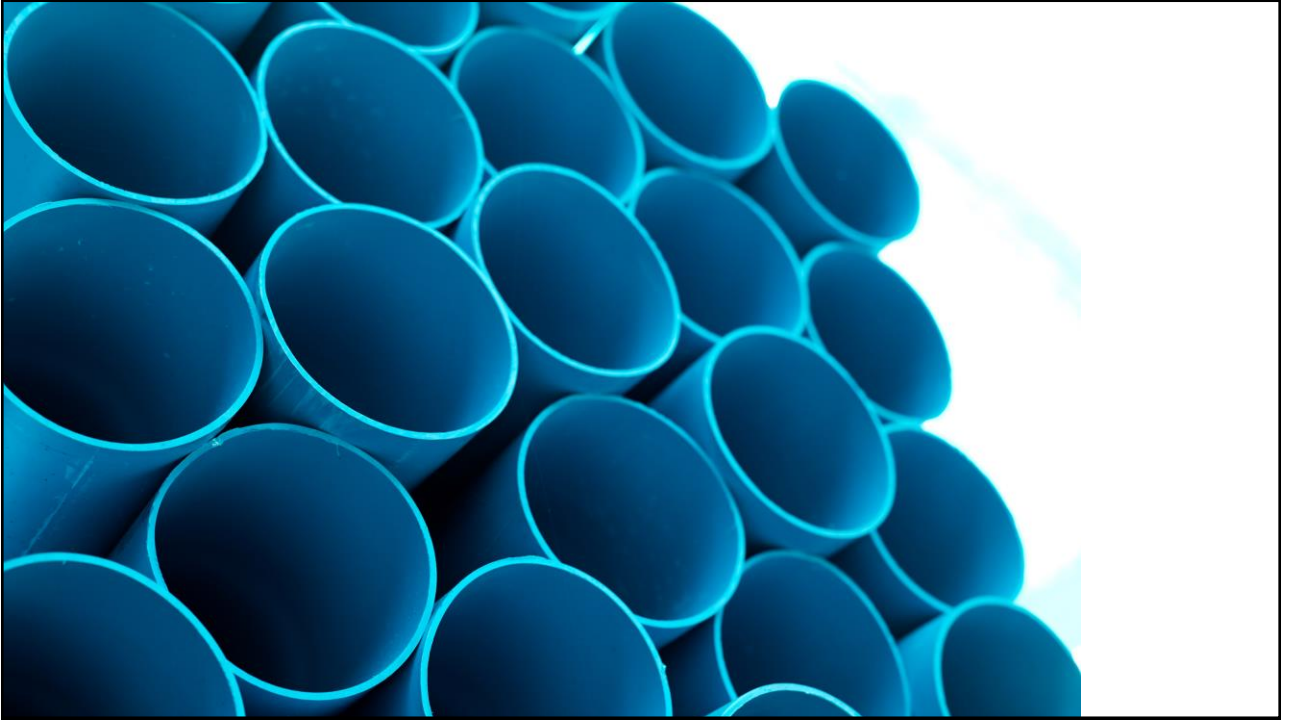
IKEA Pressa Octopus Hanging Dryer \$9.99



53



54



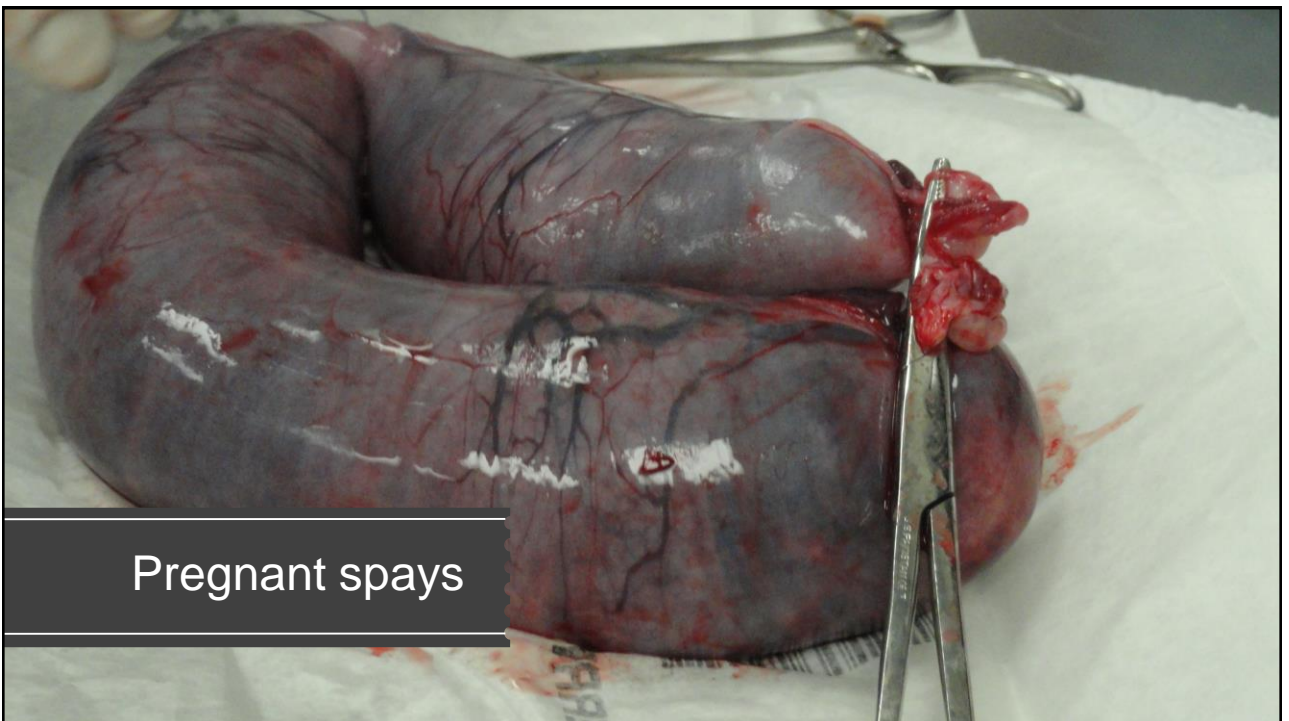
55



56



57

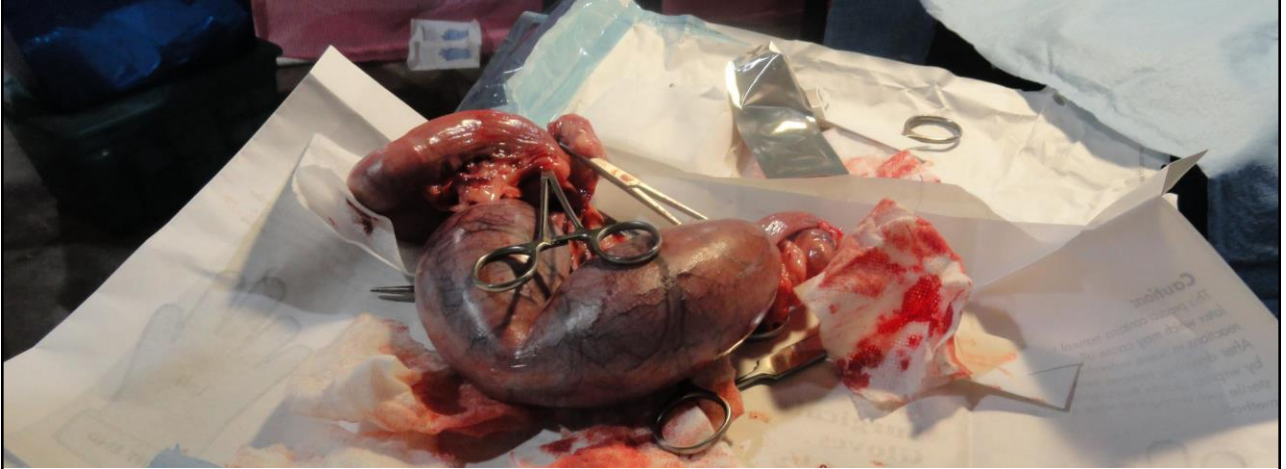


Pregnant spays

58

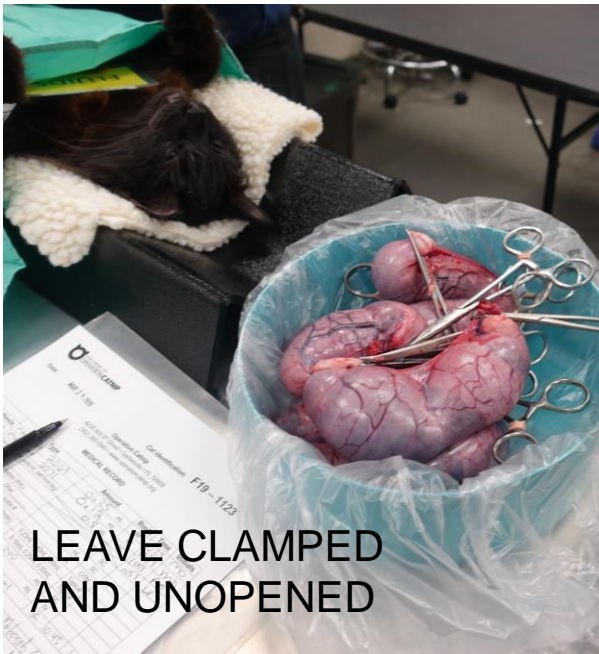
Commentary

White SC 2012 JAVMA

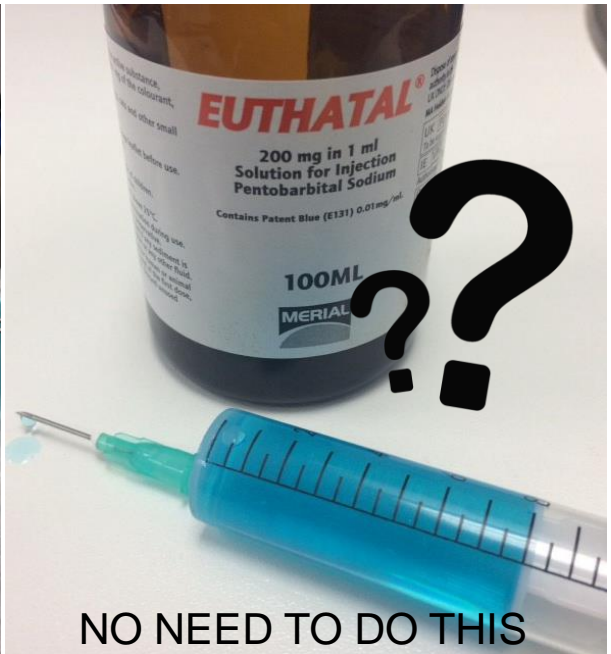


Prevention of fetal suffering during
ovariohysterectomy of pregnant animals

59



LEAVE CLAMPED
AND UNOPENED



NO NEED TO DO THIS

60



61



62