

Human Animal Support Services, a Paradigm Shift in How Shelters Care for Animals and Their People

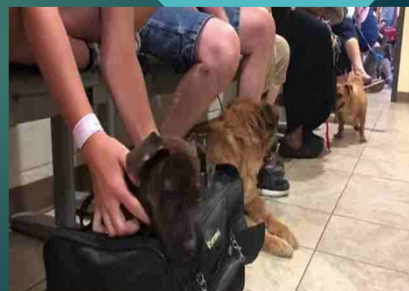
ELLEN JEFFERSON, DVM
AMERICAN PETS ALIVE!
HUMAN ANIMAL SUPPORT SERVICES PROJECT

1

Why HASS?

We have intractable problems

- ▶ 6 million pets enter shelters every year
 - ▶ 1 million pets die in shelters in the name of "population control"
- ▶ Modern animal services is built on the separation of pets from their family



2

Why HASS?



We know more now.

- ▶ 90% of pet owners value pets as much as their human family members
- ▶ 92% of loose dogs are owned
- ▶ more than 75% of reclaimed dogs are found within a mile of their home
- ▶ there may be 5x more adopters than there are animals in need
- ▶ accessibility and finances drive pet/family separation

3

Why HASS?



- ▶ We can envision a better future

We believe that unnecessary

- ▶ family separation,
- ▶ pet institutionalization and
- ▶ death

must stop being used for companion animals in the name of population control and public safety.

4

Why HASS Now?

- ▶ COVID
- ▶ Housing and Financial Crisis
- ▶ Social justice movement



5

The HASS project solves problems by....

1. Deconstructing and then re-building animal services to serve true need
2. Marrying shelters doing the work with the best minds in and out of the industry
3. Collecting and using data instead of beliefs
4. Building a policy and decision making framework for all governments to use

6

When the project is over, shelters will be able to reinvent themselves by...

- ▶ decentralizing services to where people and animals live,
- ▶ only sheltering the animals who truly need it,
- ▶ and implementing evidence based programs.



7

Who is working on the HASS Project?



8

What does success look like?

- ▶ Benchmarks met
- ▶ Key Elements Implemented
- ▶ https://www.youtube.com/watch?v=xaUd0Fet6aU&feature=emb_logo

9

Ele

- ▶ The org pet reu roaming the she
- ▶ Bench
- ▶ Acti
- ▶ Sup
- ▶ Neig doc
- ▶ # re


Dave Retna ▶ Lost, found and stolen pets in El Paso
 20m · 🌐

Thank you for everyone's advice on this beautiful boy we found on the 4th. Animal service's reached out and the owner have 4 days to claim him if not he will be able to be adopted out through them. We volunteered to keep fostering him til then. Thank you again.




👍❤️👉 23
2 Comments 5 Shares

👍 Like
💬 Comment
➦ Share

10

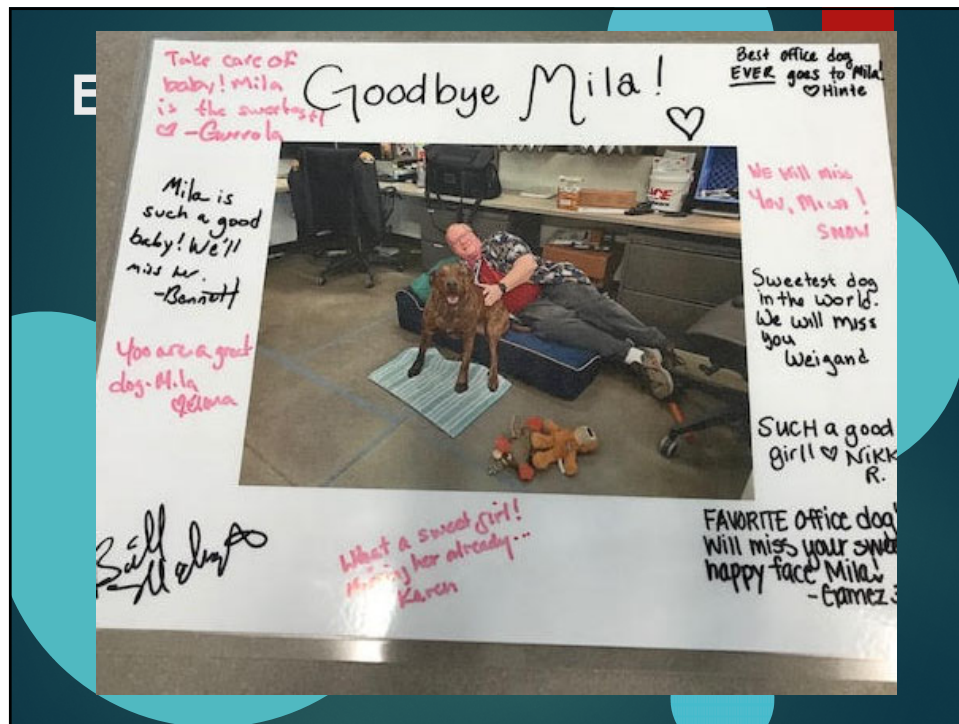
Element: Intake to Placement

- ▶ Pets physically entering the shelter have outcome pathways identified before or at the time of intake, so in-shelter length of stay is drastically reduced.
- ▶ Benchmarks:
 - ▶ LOS by type of animal

11

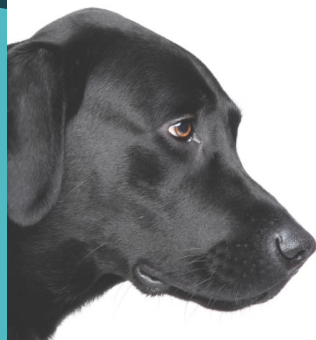


12



13

Element: Self Rehoming



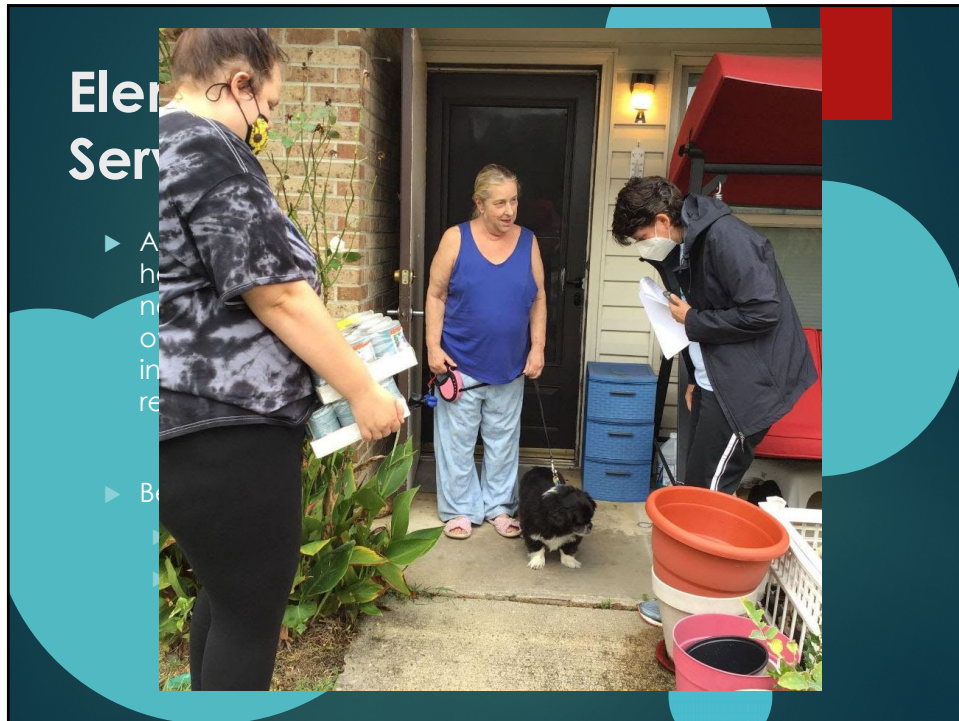
How It Works

Rehoming your pet should be easy and stress free both for you and your pet. Our experts at Adopt-a-Pet.com, the largest non-profit pet adoption website, have created a simple, reliable, free program to help you place your pet from your loving home directly to another.

- 1 Create a Pet Profile**
Get your pet posted on Adopt-a-Pet.com to be seen by millions of pet adopters.
- 2 Review Applications**
The dedicated team at Rehoming will give you all the help you need to select the best potential adopters.
- 3 Meet Adopters**
The Rehoming team will guide you through the process of setting up and pressure-free meetings with applicants.
- 4 Finalize Adoption**
Rehoming will provide you with an adoption contract to protect the transfer of your pet ownership.

[Learn More](#)

14

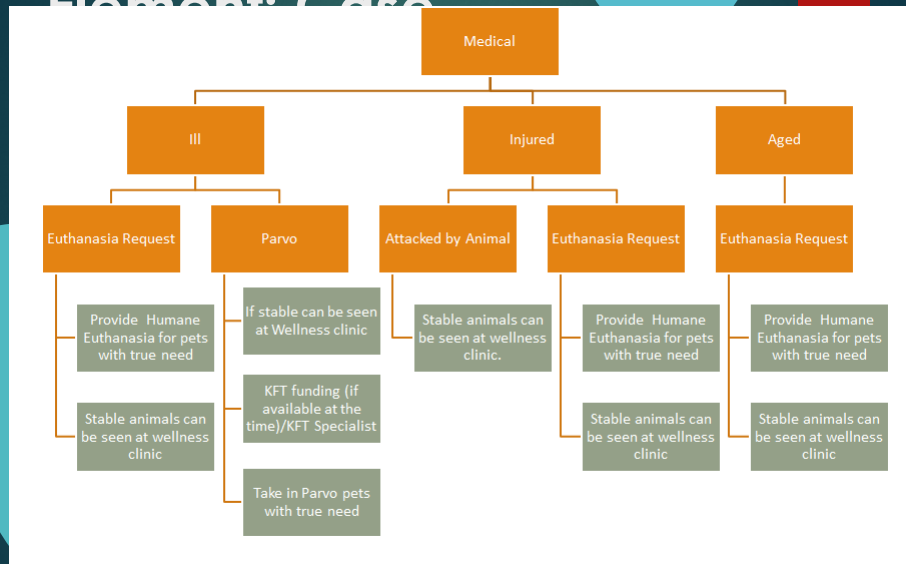


15



16

Element: Case



17

Element: Foster

- ▶ The majority of pets who enter the shelter system are placed in foster homes within hours or days of arrival and foster pets are adopted directly from their foster homes.



18

Element: Partnerships

Guilford County Animal Services

GCAS has partnered with Meals on Wheels to develop a pet food/supplies program. Last month we delivered over 800 lbs of supplies to homebound seniors, and in October we have already added five (5) additional seniors with multiple pets. We have also signed a lease at a local church, today, and are establishing a pet resource office in a local community to help with food, supplies, spay/neuter and humane education.

19

Element: Community and Volunteer Driven

- The community and volunteers are engaged in every area of operations and play a key role in implementation and creation of HASS.



20

Element: COVID and Crisis Response

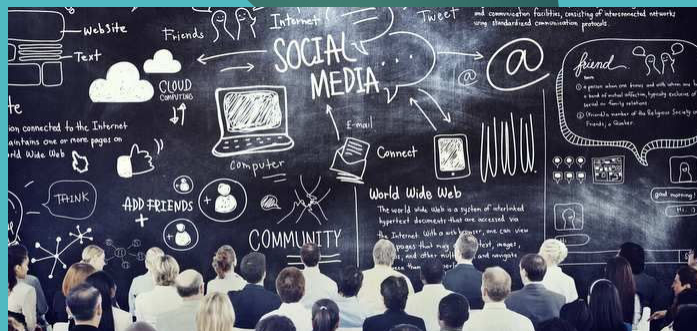
- **Ensure** government services and animal shelters are prepared to assist the public with the inevitable effects of COVID-19 and other crises.



21

Element: Innovate the Field:

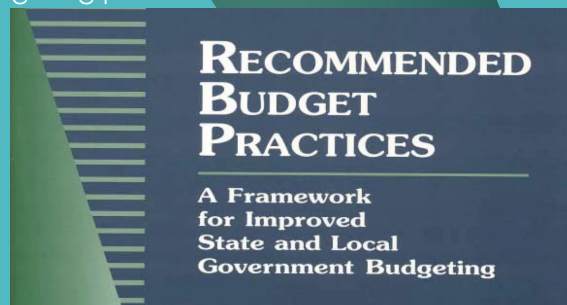
- The industry undergoes a professionalization and IT modernization process to better meet the needs of people and animals in distress.



22

Element: Government Support:

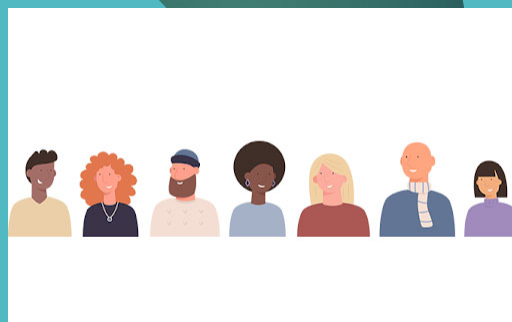
- ▶ Elected officials and government bodies understand the need and place value on the services that the Human Animal Support Services provides, or should provide, through policy and budgeting processes.



23

Element: Equity and Inclusion:

- ▶ There is a systemic approach to increased, sustainable equity, diversity and inclusion within the animal welfare field.



24

Element: Evidence Based

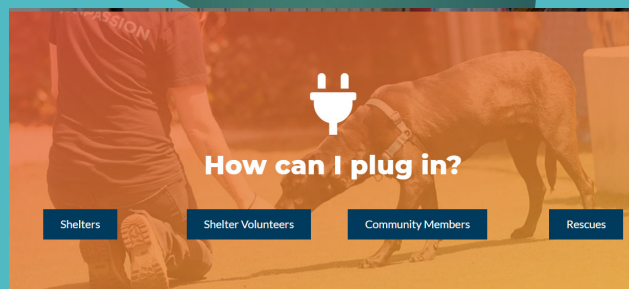
- Data and research is used to inform practices, change laws, and help people.



25

Please join the movement

www.humananimalsupportservices.org/get-involved/



26